

A woman with her arms raised in a park setting, overlaid with the CanB Corp logo. The background is a lush green park with many trees and a bright sky. The woman is wearing a grey tank top and has her arms raised in a gesture of openness or joy. The logo is centered over the image.

Can **B** Corp

A Health & Wellness Company

INVESTOR PRESENTATION

Q3-2022

DISCLAIMER AND FORWARD-LOOKING STATEMENTS

The issuer has filed a registration statement (including a prospectus) with the SEC for the offering to which this communication relates. Before you invest, you should read the prospectus in that registration statement and other documents the issuer has filed with the SEC for more complete information about the issuer and this offering. You may get these documents for free by visiting EDGAR on the SEC Web site at www.sec.gov. Alternatively, the issuer, any underwriter or any dealer participating in the offering will arrange to send you the prospectus if you request it by emailing info@canbiola.com. The Company and our officers and representatives may from time to time make, "forward-looking statements" within the meaning of the Safe Harbor provisions of the U.S. Private Securities Litigation Reform Act of 1995. Forward-looking statements can be identified by words such as: "anticipate," "intend," "plan," "goal," "seek," "believe," "project," "estimate," "expect," "strategy," "future," "likely," "may," "should," "will" and similar references to future periods.

Examples of forward-looking statements include, among others, statements we make regarding: guidance relating to net income and net income per share; expected operating results, such as revenue growth and earnings; anticipated levels of capital expenditures for the fiscal year; current or future volatility in the credit markets and future market conditions; our belief that we have sufficient liquidity to fund our business operations as planned; expectations of the effect on our financial condition of claims, litigation, contingent liabilities and governmental and regulatory investigations and proceedings; strategy for growth, product development, market position, financial results and reserves; strategy for risk management. Forward-looking statements are neither historical facts nor assurances of future performance.

Instead, they are based only on our current beliefs, expectations and assumptions regarding the future of our business, future plans and strategies, projections, anticipated events and trends, the economy and other future conditions. Because forward-looking statements relate to the future, they are subject to inherent uncertainties, risks and changes in circumstances that are difficult to predict and many of which are outside of our control.

Our actual results and financial condition may differ materially from those indicated in the forward-looking statements. Therefore, you should not rely on any of these forward-looking statements. Important factors that could cause our actual results and financial condition to differ materially from those indicated in the forward-looking statements include, among others, the following: economic and financial conditions, continued volatility in the capital or credit markets; the adequacy of our cash flow and earnings and other conditions; developments and changes in laws and regulations.

Any forward-looking statement made by us in this document is based only on information currently available to us and speaks only as of the date on which it is made. We undertake no obligation to publicly update any forward-looking statement, whether written or oral, that may be made from time to time, whether as a result of new information, future developments or otherwise.

This overview is for information purposes only and does not constitute an offer to sell or a solicitation of an offer to buy any interests in CANB. Any such offer will be made only pursuant to the Company's S-1 offering. This overview may include or be based in part on projections, valuations, estimates and other financial data supplied by third parties, which has not been verified by CANB. This information should not be relied upon for the purpose of investing in the Company or for any other purpose. Any information regarding projected or estimated investment returns are estimates only and should not be considered indicative of the actual results that may be realized or predictive of the performance of the Company. The information contained herein has been prepared by management of the company to assist interested parties in making their evaluation of the Company and does not purport to contain all of the information that a party may desire. In all cases, interested parties should conduct and rely on their own investigation and analysis of the Company and the data set forth herein. All information contained herein is the confidential and proprietary information of the Company and as such, cannot be disclosed, reproduced or distributed without the prior written consent of the CEO of the Company.

The statements made within this presentation have not been evaluated by the U.S. Food and Drug Administration. These statements and the products of this Company are not intended to diagnose, treat, cure or prevent any disease.

Management Team



Marco Alfonsi

Chairman, Director, & CEO

- 20-year career as financial service professional where he was directly and indirectly involved in raising over \$100M for small and medium sized businesses.
- Owned, operated, financed and sold several businesses.
- Held senior management positions with a number of financial institutions.



Stanley L. Teeple

Director & CFO

- Former Senior Vice President, CFO, Corporate Secretary, and Chief Compliance Officer of Multiple Publicly Traded Companies.
- Held numerous senior management positions in several public and private companies across a broad spectrum of industries.



Philip P. Scala

Chief Operating Officer

- Mr. Scala is the founder and CEO of Pathfinder Consultants International, Inc. ("Pathfinder") since 2008.
- Prior to forming Pathfinder, Mr. Scala served the United States Army for five years followed by his 29 years of service with the FBI. Mr. Scala received his bachelor's degree and MBA in accounting from St. John's University; he also earned a Master of Arts degree in Psychology from New York University.

OPERATING DIVISION MANAGERS AND DIRECTORS

Hemp Operations

Co-Directors

Rickey Minton and Bradley Lebsock

CO Botanicals LLC Operations

Bobby Lebsock

TN Botanicals LLC Operations

Chris LePlante

Botanical Biotech LLC Operations

Jesse Morris & Brandon Ault

DuraMed Inc./ DuraMed MI

Sonia Sachdeva, Director of Operations

Pure Health Products LLC

Pat Ferro- Division President

Imbibe Health Solutions, LLC

Walter Hoelzel | Division President

Green Grow Farms, Inc.

Corporate Managed

Advisory Boards

Directors



Marco Alfonsi

Chairman, Director & CEO CanB Corp.

Stan Teeple

Director & CFO CanB Corp.

Fredrick Alger Boyer, Jr.

Independent Director

Served as Head of Equities for the New York based investment bank H.C. Wainwright & Co. Prior leadership roles include work with Rodman & Renshaw, Oppenheimer, Piper Jaffray, and Credit Suisse in New York, San Francisco, and Minneapolis.

James F. Murphy

Independent Director

Founder and President of Sutton Associates. From 1980 to 1984, Mr. Murphy was an Assistant Special Agent in Charge with the Federal Bureau of Investigation.

Senator Ron Silver

Independent Director

Former Florida Senate majority leader and chairman of both the Appropriations Subcommittee on Health and Human Services and Criminal Justice.

Medical



Matt Ferenc, D.O.

Works at level 1 trauma center in Fort Lauderdale, Florida. Assistant clinical professor for NOVA and for FIU.

Patrick Fratellone, M.D. RH (AHG) FIM

Integrative physician in New York City. Registered Herbalist RH and a member of the American Herbal Guild.

Robert A. Kornfeld, M.D.

First holistic oriented podiatrist in the U.S. Expert in homeopathic injection therapy, nutritional and herbal medicine, lower extremity biomechanics and functional medicine.

Corporate



John Bach, Esq.

Chief Business Development Officer, and General Counsel to The Whitmore Agency, Garden City, NY.

Steven Medina, Esq.

Well-recognized and seasoned healthcare professional in corporate compliance.

Investment Highlights

1

\$ 16 Million Assets

\$ 6 Million Debt

2

HEMP DIVISION

Current Revenue

\$150,000 per week

3

+500% Growth

Quarter over Quarter

2021 vs. 2022

Employment of Niche and Broader Consumer
Go-to-Market Strategies for CBD Lines

Business is Vertically Integrated in Hemp

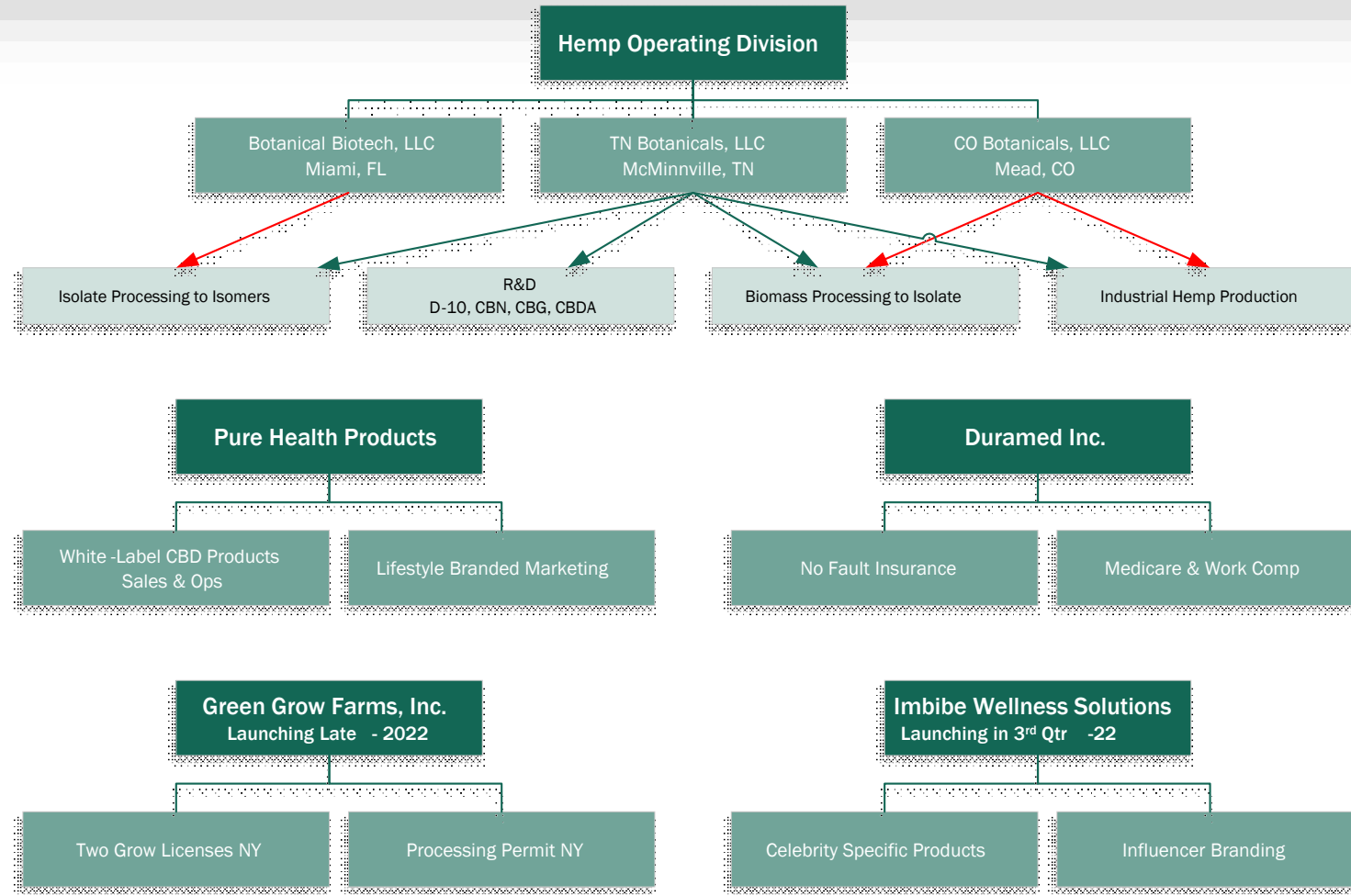
- Growing/Harvesting to Biomass
- CBD Biomass to Crude Oil
- Crude to Distillate
- Distillate to Isolate
- Isolate to isomers D-8 / CBG / CBN / CBDA

Medical Device Division Poised to Capitalize
on Addressing the Opioid Crisis and Aging
Population

White-Label Business Positioned to Grow
10-Fold Over 3-years with NSF Certification

Lifestyle Branded Launching 3rd Qtr 2022.

Corporate Structure - 2022 - Operating Divisions



Corporate Revenue Growth



Hemp Operating Division

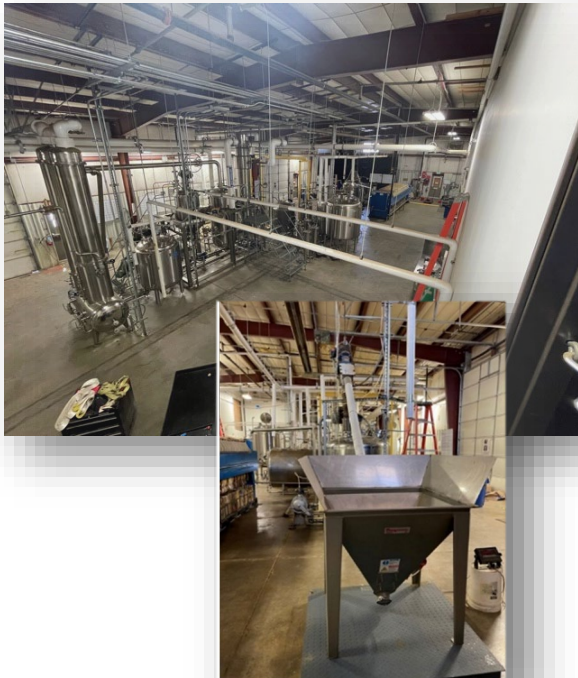
CO Botanicals, LLC

Mead, Colorado

Begin Processing

Processing

Hemp Biomass  Crude Oil



Production

Extraction

Ethanol Extraction Facility
1,000 L. Isolate/Week **THC-FREE HEMP**



FOCUS

Potential Production for 2022 Max Capacity

Biomass into Winterized Decarbed Crude:

240,000 lbs. per Month Converts into 10,000+
Liters of Winterized Decarbed Crude per Month.

Hemp Operating Division

CO Botanicals, LLC

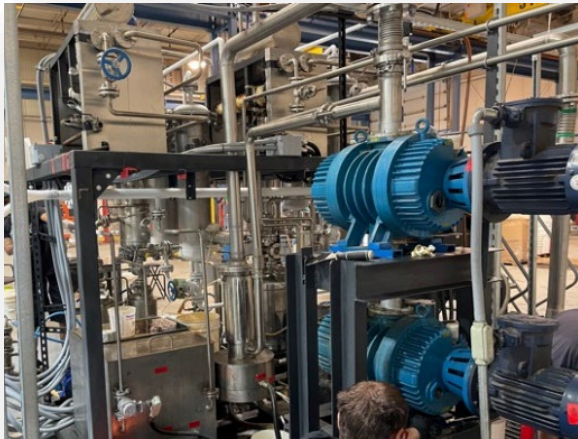
Fort Morgan, Colorado

Distilling

Crude



Distillate



Crashing

Distillate



CBD Isolate



FOCUS

Potential for 2022 Max Capacity

Distillate

28,000 Liters per Month

Max Capacity Isolate

6,600 kilos

\$2 Million of Isolate per Month Shipping for Further Processing

PHP – Lacey WA

Isomer Production

McMinnville, TN

Miami, FL

Hemp Operating Division

TN Botanicals, LLC

McMinnville, Tennessee

Research & Development Lab

Production

Butane Lab



Hemp Flower CBDA
CBCS / CBGA

Extracting Isolate to Isomers

Converting

Hemp Derived
CBD



Isomers



FOCUS

Research & Development

Facility for Isolate to Isomer

D8, D10, CBG, CBNA
(THC-Free)



Hemp Operating Division

TN Botanicals, LLC

McMinnville, Tennessee

Processing



Production



FOCUS

Potential for 2022 Max Capacity Isomer

5,000+ Liters \$4 Million per Month

Processing

20 Hours per Day Operations

600 Liters / Week Isomers

\$300,000 / Week

Complete / Retail

Retail Line including Vapes,
Tinctures, Shatter, Creams, Lotions,
Smokable Flower (THC-Free!)
& More.



Hemp Operating Division

Botanical Biotech, LLC
Miami, Florida

Processing



Production



FOCUS

Processing

Taking CBD Isolate Synthetically Created
THC-Free Delta-8.

20 Hours per Day Operations

200 Liters / Week Isomers

\$250,000 / Week

Diverse Products

Delta-8 Sprayed Smokable
Hemp Flower (THC-Free)

Edibles such as Delta-8 (THC-Free)
Gummies, Chocolates, Ice Cream,
Suckers, Popcorn & Gelatos.



Hemp Operating Division

Botanical Biotech, LLC
Miami, Florida

Research & Development Lab



FOCUS

Potential for 2022 Max Capacity Isomer

1,600+ Liters \$1 Million per Month

Research & Development

Facility for Isolate to Isomer
D8, D10, CBG, CBN

Outreach

CBD Wellness Education and Retail Showroom
Corporate Meeting Lounge and Event Center
Opening Soon

Modification

Hemp Molecule into Further
Processed Products such as
Delta-10 and more...

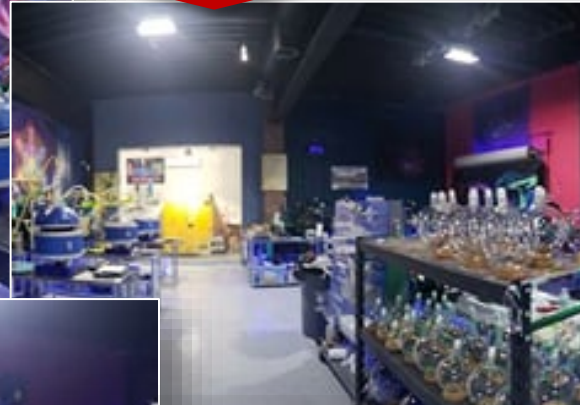


Hemp Operating Division

Event / Consumption Lounge

Miami, Florida

Can-B-Corp Inks New Multi-Unit Development Agreement with American Development Partners for Initial Commitment of \$200 million in up to 50 Lounges



FOCUS

Market Analysis

Showcase New Products

Edibles- Chocolates & Gummies

Alcohol Free Drinks

Gelato & Ice Cream- Delta-8 (THC Free)

Sales & Marketing Strategy

Consumption Lounge

Target Market

Event Marketing

Corporate Executives

Influencers

Celebrities

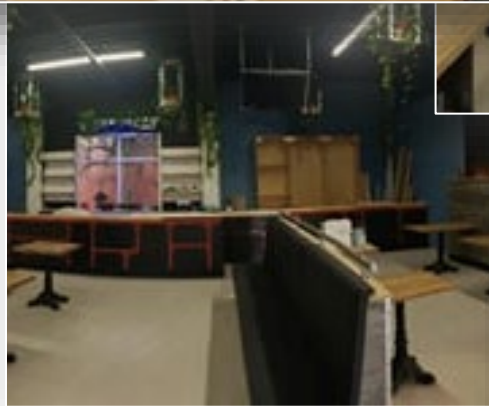
Socialites

LAB²
LOUNGE

Hemp Operating Division

Event / Consumption Lounge

Miami, Florida



FOCUS

Venue Highlights- Launching in 2022

- SQUARE FOOTAGE:** 1,500 Square Feet (Indoor) / 1,000 Square Feet (Patio)
- CAPACITY:** 150 Total – Flexible Indoor / Outdoor Area / Indoor Seated / Bar Area / Lounge Tables – VIP Tables / Outdoor Patio
- TECH:** Plug and Play Surround Sound System. 140 inch Hi-Def 4k Bridged TVs. Podcast, Karaoke, and DJ with Stage Capabilities. High Speed Wi-Fi.
- PATIO:** Relax in Our Comfortable Outdoor Patio Atmosphere. Open Year Round, Complete with Tables, Sound System, and Accessibility to Food Vendors.
- LAB:** Delta-8 and Delta-10 and Isomer Product Lab Visible to the Public (with Reservations).
- CULINARY OFFERINGS:** Bar Grub and Food Truck Menus Available. Ordering Capabilities Online or In-App.
- Delta-8 Lab & Mixology:** Exclusive Mixology Program features Unique Cocktails and Sodas Infused with Delta-8.

LAB²
LOUNGE

Pure Health Products, LLC

White Label CBD
Sales & Operations

JUST RELEASED

CBD Approved for Brazil Market and Joint Venture with PrimeX & Biocase Brasil for CBD Distribution into Potentially 100,000+ Pharmacy Retailers.



FOCUS

NSF CERTIFIED

Access to Major Retailers

\$1 Million Annual Revenue

\$12 Million Capacity

Class 7 Clean Room





Provides State-of-the-art Nutraceutical Production Facility

Lab Tested

3rd Party Lab Certificate Of Analysis Posted On Web Site For All Products

Pure Health Products, LLC

CBD Branded Marketing

 <p>Primary Distribution Channel: Doctors & Medical Facilities</p> <p>Positioning: Recommended by Doctors</p>	 <p>Primary Distribution Channel: Online and Retail</p> <p>Positioning: The CBD That's Right for Me</p>	 <p>Primary Distribution Channel: Independent Pharmacists</p> <p>Positioning: Pharmacists Recommended</p>	 <p>Primary Distribution Channel: Spas & Salons</p> <p>Positioning: The CBD That Empowers Me</p>
--------------------------------------------------------------------------------------------------------------------------------------------------------------------------------------------------------------------------	----------------------------------------------------------------------------------------------------------------------------------------------------------------------------------------------------------------	-------------------------------------------------------------------------------------------------------------------------------------------------------------------------------------------------------------------	---------------------------------------------------------------------------------------------------------------------------------------------------------------------------------------------------------------



FOCUS

Major Product Forms | SKUs
Topicals, Ingestible(s), Bath Products, Pet Products

All Can-B CBD Brands are THC-Free Cannabidiol (CBD) Isolate Products.

All Products are Produced in our Manufacturing Facility in Lacey, WA.

The Custom-Formulation Produces An Ultra-Pure Nano: 99.95% Pure CBD and Non-GMO.

All Products are Made from Certified Organic Materials.

Pure Health Products, LLC

Doctor Affiliate Program

The New Way to Sell CanB MD Products!

The image shows a doctor in a white coat standing in the center. To his left is a product card for 'Hemp Extract Nano Drops' priced at \$40. To his right is a product card for 'SPORT Massage Oil' priced at \$8.00. Below the doctor are three promotional signs: a vertical sign with a QR code and product images, a smaller vertical sign with a QR code and product images, and a horizontal sign that says 'BUY CanB MD PRODUCTS HERE' with a QR code and product images. To the right of the doctor is a smartphone displaying the CanB MD online store interface, which includes a 'Doctor John' profile, an 'Online Store' header, and a grid of products with prices: 'SPORT Massage Oil' (\$22.50), 'Plant Relief Spray' (\$40.49), 'Coffee Mocha Can B' (\$29.99), and 'Cannabidiol Hemp Extract' (\$50.39).

FOCUS

Doctors Affiliate Program

Sales Channel via Doctor Office Networks for CanB MD Products

Our Affiliate Program Offers:

- More Flexible Access to CanB MD Products
- Transparent and automatic commission payouts
- No Inventory
- No Investment
- No Order Fulfillment
- Customized Marketing Collateral including Web Presence

Green Grow Farms, Inc.

Grow/ Cultivate/ Process/ Extract
Upstate, New York



FOCUS

Industrial Hemp Vertically Integrated

Two NY Grow / Cultivation Licenses

Processing and Extraction Registration with New York State
Farm Partners on Lease / Profit Share Program F
Currently GGFI is not Growing due to Available
Biomass Capacity for Less Cost than Growing and
Harvesting

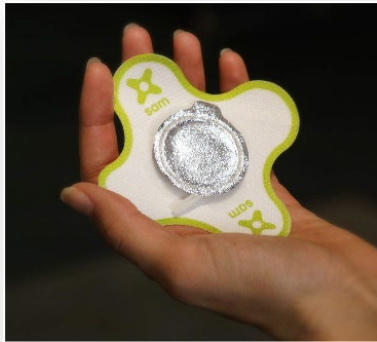
Controlled Environment for Seed Propagation & Clones

Developing Auto Packaging for Bulk & Pre-roll



Duramed, Inc.

Pain Management & Injury Recovery Medical Equipment
Long Island, New York



FOCUS

2021 /2022 Major Strategic Initiatives

Expand Medical Device Offerings

500 Units in Circulation – Each Unit Generates
\$12,000 Annual Revenue at 50% Gross Margin

Addition of Braces, Supports, and
Props to Device Lineup

Pain Management & Injury Recovery

Accelerate Healing, Reduce Pain, Reduce
Swelling & Improve Injury Recovery via
Capillary Vessel Stimulation

Duramed, Inc.

Worker's Compensation & In-House Billing

Long Island, New York



FOCUS

USA Manufactured

FDA Approved

Used by US Military, Major Pro and College Sports Teams

In-House Billing

Establish Internal Operations to Increase Control and Profitability of Billing and Collections

Worker's Compensation & Medicare

Expansion and Increased Leverage Against Profitable and Growing Market.

Offices and Operations in "No-fault" States

Long Island, NY

Detroit, MI

Coming Soon: Miami, FL



Growth Strategy Building Blocks

- 01.** Pharmaceutical and Nutraceutical Supplement Line and Market Expansions of Niche and Broader Consumer Mkts for CBD and Non-CBD Lines.
- 02.** Business is Vertically Integrated – Biomass to Isomers. Major Processing Agreements.
- 03.** Medical Device Division Poised to Capitalize on Addressing the Opioid Crisis and Aging Population.
- 04.** White-Label Business Projected to Grow 10-Fold Approval Allowing Manufacturing for Major Retailers Worldwide.
- 05.** Lifestyle Branded Business Launching with Iconic Brand.
- 06.** Extraction Processing Business Model to Purchase Biomass for Stock and Post-Processing Net Revenue Split

Stock Listing

Stock Symbol: CANB
CANBCORP.COM | (516) 595-9544

Stock Symbol*		Operational Overview	
Exchange / Ticker	OTCQB: CANB	Headquarters	Hicksville, NY
Stock Price	\$4.50	No. Employees	68
Market Cap	\$16.0M	Founded	2015
No. Shares Outstanding	3.5M	Fiscal Year	Dec. 31
No. of Shareholders	4,691	2021 Dec YE Revenue	\$4.6M

Corporate Video



A person with their arms raised in a park setting, overlaid with the Can Biola Corp logo. The person is seen from behind, wearing a grey tank top, with their arms extended horizontally. The background is a lush green park with many trees and a bright sky. The logo consists of the word 'Can' in a serif font, a dark green circle containing a white 'B' with a horizontal bar over it, and the word 'Corp' in the same serif font.

Can **B** Corp

A Health & Wellness Company

THANK YOU

marco@canbiola.com | stan@canbiola.com